

ACCESSORIES & OPTIONS

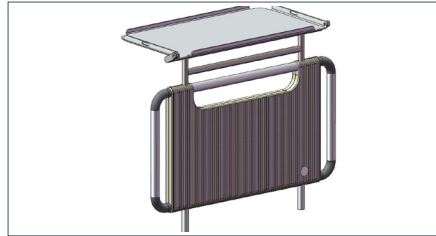
M9 WARD/M9 COMPACT/M9 PAEDIATRIC



Self help pole

- Part No.: M729-01 (Fixed strap handle)
- Part No.: M729-02 (Adjustable handle)
- SWL: 100kg

Self help pole can swivel 90°. Handle height: 730mm to 1000mm above mattress platform.



Monitor tray

- Part No.: M924-02
- SWL: 25kg

Powdercoated top with raised edges. Safety strap included.



Storage basket

- Part No.: M923-02
- SWL: 20kg

Robust, powder coated steel and stainless steel construction for patient belongings.



Socket IV pole, 4 hooks

- Part No.: M728-07
- Part No.: M728-08 (stored in socket) (tethered - not available with M9 Paediatric)
- Part No.: M928-03

(4 hook IV Pole with bogie storage hooks, vertical bar only)

- SWL: 15kg

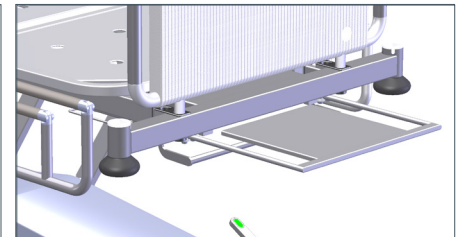


Socket IV poles, 2 hooks

- Part No.: M728-02
- Part No.: M728-01 (stored in socket) (tethered - not available with the M9 Paediatric)
- Part No.: M928-02

(2 hook IV Pole with bogie storage hooks, vertical bar only)

- SWL: 15kg



Linen rack

- Part No.: M943-01
- SWL: 10kg

The linen rack can be factory fitted to the foot end of the bed. (Not available with the M9 Paediatric)



Urine bottle holder

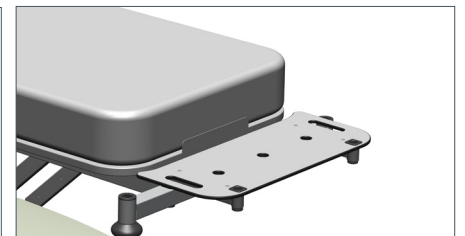
- Part No.: M727-01
- SWL: 2kg

Urine bottle holder fits over the top bar of siderail. Made from stainless steel.



Mobile IV pole base

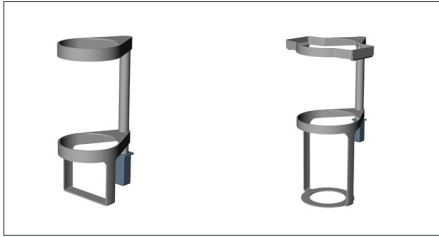
- Part No.: WD28-40
- SWL: 20kg



M9 Ward Plug-in Bed extension

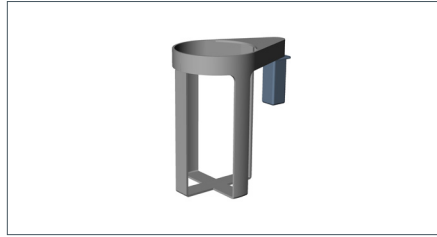
- Part No.: M721-01 (extension)
- SWL: 25kg

The bed extension can be attached to the foot end of the M9 WARD (not available with M9 Paediatric bed).



Oxygen cylinder carrier

- Part No.: M725-01 (size A/C)
 - SWL: 10kg
 - Part No.: M725-02 (size D and D2)
 - SWL: 15kg
- Stainless steel carrier can be placed in any accessory socket.



Inhalo cylinder carrier

- Part No.: M725-03
 - SWL: 10kg
- Stainless steel carrier can be placed in any accessory socket.

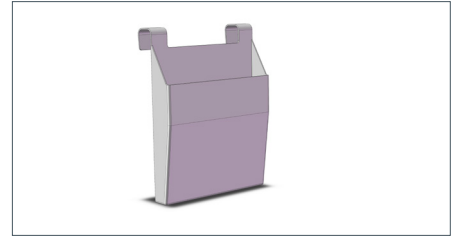


Chart holder

- Part No.: M749-01
 - SWL: 2kg
- The Chart holder can be placed over the bed ends.
Made from ABS.



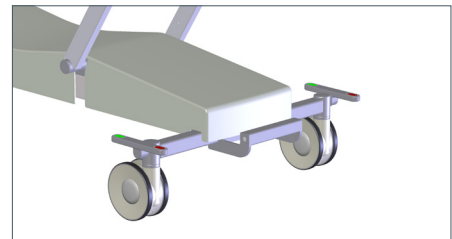
Orthopaedic frame

- Part No.: M748-01
 - SWL: 100kg Self help handle
 - SWL: 30kg Traction weights (not included)
- Made from stainless steel.



Orthopaedic frame foot end

- Part No.: M748-02
 - SWL: 30kg Traction weights (not included)
- Made from stainless steel.



Stamina lift push bar

- Part No.: M720-02
- SWL: 200kg

Other Accessories available:

Mattresses (latex free)

- Ward mattress Part No. HC00103
2000 x 860 x 160mm
- Compact mattress Part No. HC00104
1900 x 860 x 160mm

Bolster mattress for M9 WARD (latex free)

- Part No.: HC016
160x750x280mm

Bolster mattress for M9 COMPACT & M9 Paediatric (latex free)

- Part No.: HC017
225x750x210mm

Siderail covers

- Part No.: M944-01
Usable on M9 3ED Ward/Compact Vertical Siderails and M9 Paediatric
- Part No.: M944-02
Usable on M9 3ED Ward/Compact Horizontal Siderails

Residual Current Device (RCD)

- Part No.: factory fitted option

Universal retainer kits

- Part No.: M950-05
- 6 piece kit

Patient Serving Tray

- Part No.: MED-SM.TR1 (Smart Tray)



Design and Development, Production, Sales, Distribution and Servicing of Medical Beds, Stretchers and Accessories

Howard Wright Limited has a policy of continuous product improvement and reserves the right to change product specifications without notice. Howard Wright Limited is certified to ISO13485:2016.
© Howard Wright Limited, 2019

For further information, please refer to:
M9 Ward/Compact Instructions for Use and/or M9 Paediatric Instructions for Use and/or M9 Accessory Instructions for Use.