

PACIFIC SHOWER-BATHING TROLLEY



Unique solution for safe patient showering, bathing and transfer

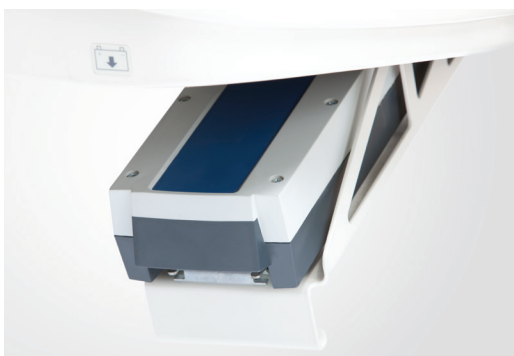
The versatile Pacific Shower-Bathing Trolley provides a safe environment for showering, bathing and transfer. The soft, padded top is ideal for patients with delicate skin or disabilities.

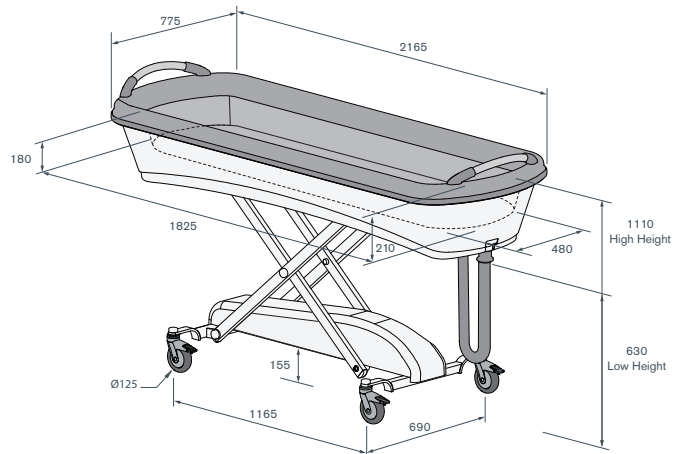
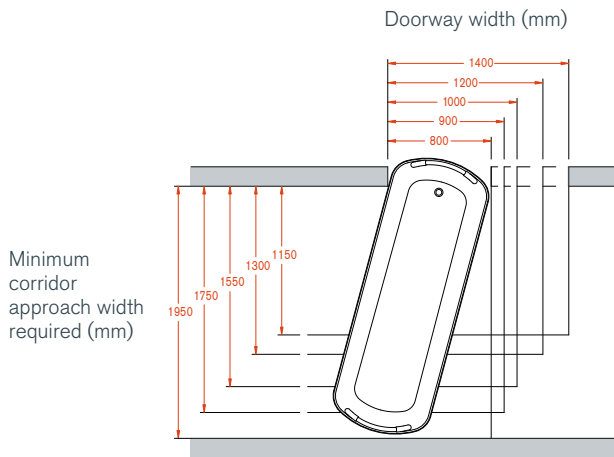
The electric high-low and unique electric tubsides actuation provides an ergonomic working height for caregivers and ensures safer patient transfers.

The Pacific Shower-Bathing Trolley has been carefully designed to be intuitive and easy to use meaning minimal user training is required. The one piece seamless design also makes it easy to clean.

FEATURES

- Fully electric controls with battery backup
- Tub sides lower to become flush with patient platform
- High performance LINAK and TENTE components
- 200kg Safe Working Load
- 125mm corrosion resistant castors
- Safe 24V DC system with remote battery charger
- Power cords available to suit different countries
- Soft, padded polyurethane tub
- Low battery warning light on handset
- Waterproof pillow
- Push handles at both ends
- Siderail (option)





SPECIFICATIONS

MODEL:	ST 2.1 and ST 2.2 (Base raised 30mm)
IP RATING:	IPX5
EEC CLASSIFICATION:	Class 1, Non-invasive
MAXIMUM SWL:	200kg (incl. patient, accessories & water)
TROLLEY MASS:	100kg

- Unique, seamless deep tub design enables immersion bathing
- Fully electric controls enables adjustment to a comfortable working height
- Easy cleaning for improved infection control
- Safe 24V DC system with remote wall mounted battery charger
- Ergonomic push handles at both ends
- Castors: 125mm (synthetic with sealed wheel bearings), 3 individual locking, 1 directional locking
- 360° bumper
- LINAK controls with 2 actuators, control box, handset & battery

ELECTRICAL SPECIFICATIONS:

- Power source: Rechargeable battery, 24V DC, 2.9Ah
- Battery charger input: 100 - 240V AC, 50-60 Hz, 400mA (max)
- Battery charge time: 6 hours
- Number of full load cycles: approx. 30
- Time to raise or lower patient platform: 30 sec
- Time to raise or lower tub sides: 22 sec

SAFETY COMPLIANCE

Developed in accordance with the requirements of IEC 60601-1:2005/AMD1:2012 and IEC 60601-2-52:2009/AMD1:2015 and IEC60601-1-11:2015.

DIMENSIONS

- Trolley overall: L: 2165mm, W: 775mm
- Tub platform L: 1825mm, W: 480mm
- Wheel base: 1165mm, wheel track: 690mm
- Castor diameter: 125mm single wheel
- Maximum tub depth (drain end): 210mm
- Maximum tub depth (head end): 180mm

ADJUSTMENT RANGE:

	ST2.1	ST2.2
• Maximum overall height (sides up, incl handles):	1155mm	1185mm
• Maximum trolley height (sides up, excl handles):	1080mm	1110mm
• Minimum overall height (sides down, incl handles):	600mm	630mm
• Minimum trolley height (sides down, excl handles):	525mm	555mm
• Maximum patient platform height (drain end):	870mm	900mm
• Maximum patient platform height (head end):	900mm	930mm

UNDERSIDE CLEARANCES (FOR PATIENT LIFTERS)

- Maximum floor clearance: 125mm 155mm

www.howardwrightcares.com

Paraité Road, Bell Block PO Box 3003, Fitzroy New Plymouth 4341 New Zealand T. +64 (6) 755 0976 F. +64 (6) 755 0908	PO Box 2786 Taren Point New South Wales 2229 Australia T. 1800 120 727 F. 1800 120 717
--	---



Design and Development, Production, Sales, Distribution and Servicing of Medical Beds, Stretchers and Accessories

Howard Wright Limited has a policy of continuous product improvement and reserves the right to change product specifications without notice. Howard Wright Limited is certified to ISO13485:2016.

